



Gitikala[®]
General Catalogue
Construction and Urban industry



SGP Group at a glance

Company Name	Products	Brand Name
Giti Kala Iranian	SGP sales network	GITIKALA
Ati Looleh Sepahan	Five layer Pex-Al-Pex Pipes Five layer Pert-Al-Pert Pipes	NEW PIPE
Azin Looleh Sepahan	Single layer PPRCT, three layer PPRCT/Gf	AZIN PIPE , AZIN⁺ , ALS
Esfahan Chalak	Brass fitting for five layer pipes Brass valves	SGP , NPA
Mona Polymer Espadana	PPRCT fittings	ALS
Novin Ettesal Pardis Gostaresh	PP push-fit sewages pipes & fittings (B & BD & Silent)	New Flex
Dina Polymer Safahan	PE pipes and fittings Drip irrigation pipes and fittings	Dina Polymer
Ghatran Ettesal	PE pipes and fittings(welding and fusion Types)	Ghatran Ettesal
Sepehr Polymer Spadana	EPE and XPE thermal insulations	Sepehr Polymer
Behin Sazan	Gypsum board (RG and MR) and ceiling tiles	Batis
Hamgam Taban Asia	Steel Radiator and wall hang combi boiler	Hamgam Taban Asia
Sorosh Sanat Spadana	Brass billets and rods	Sorosh Sanat Spadana
Petro Zar	Chemical solutions, PVC adhesive, PE waxes	PetroZar
Behin Pardazan Kosha	Compound, granule, masterbach, adhesive	BEHIN POLYMER
Faraz Gostar Pouya	Capacitors for electromotor and lighting	RSN
Kaghaz Sabz Sepahan	Stone papers	Kaghaz Sabz Sepahan



Gitikola

Giti Pasand Industrial Group



Nasser Jannati

Founder of Giti Pasand Industrial Group

■ Giti Pasand Industrial Group

Giti Pasand Industrial Group, the Mideast largest production complex in the building installation industry, was established in June 1998 through foundation of polymer, mechanical and electrical research centers and establishment of production units in Isfahan. Entrepreneurship and production of high quality products were the two purposes of founding this complex, both realized in establishment of 20 production and service units in specialized fields of polymer, construction products (water & sewage), metallurgy and agriculture. Currently, some 3000 staff cooperate directly with the complex, while so do more than tens of thousands of construction industry experts through indirect ways.



■ Giti Kala

Giti Kala Iranian Company was established in 2021 to form a widespread sales network for the products of Giti Pasand Industrial Group.

At the time being, the company is committed to provide its customers with a variety of products such as: five- layer PEX-AL-PEX & PERT-AL-PERT, as well as single-layer PPR & PPRCT pipes and fittings, three- layer PPRCT pipes (with glass fibers), several kinds of coupling, press and clamp fittings, installation valves and collectors, versions of sewage push-fit pipes and fittings (simple & silent), different thermal insulations, PE irrigation pipes, all types of polyethylene welding joints, various sorts of tiles and gypsum boards, PVC- U sewage pipes and connections, and finally wall - hang combi boilers, steel panel radiators ,etc.



Gitikala®

www.sgpco.com | www.gitikala.com



NEW PIPE

Five-layer pipes and fittings

A resume as wide as middle east

■ Ati Looleh Sepahan Company, one of the subsidiaries of **SGP** has been developing five-layer PERT/AL/PERT and PEX_b / AL / PEX_b pipes under the brand name of 'NEW PIPE', both qualified for different applications as heating and cooling systems in terms of standards. The latter ones with a five-layer structure and the use of PEX polymer boosted with aluminum can withstand a temperature of 90°C in a pressure of 10 bars.

The company now has 37 production lines with an annual capacity of 120 million meters in the sizes of 16 to 63 mm. Meanwhile, the brass fittings of these pipes are also being produced in Isfahan Chalak Company under the brand name of **NPA** with a variety of more than 500 types of fittings.

■ Technical specifications

Size (m)	16	20	25	32	40	50	63
Dimensions (inner & outer)	12-16	16-20	20-25	26-32	32-40	41-50	51-63
Weight per meter (gr./m)	105	145	200	310	490	730	1220
Pipe water load (litr./m)	0.113	0.201	0.314	0.498	0.804	1.320	2.042
Min. pipe thickness	1.65	1.90	2.25	2.90	3.40	4.00	4.60
Roughness Index (m)	0.007						
Thermal conductivity coefficient (W/m ² K)	0.40						
Linear expansion coefficient (m/mK)	25x10 ⁻⁶						
Operating temperature (long time)	80 °c						
Operating temperature (short time)	100 °c						
Operating temperature for liquids	- 40						
Pressure tolerance in 50 years (constantly) (bars)	10						
Pipe usage class	5						

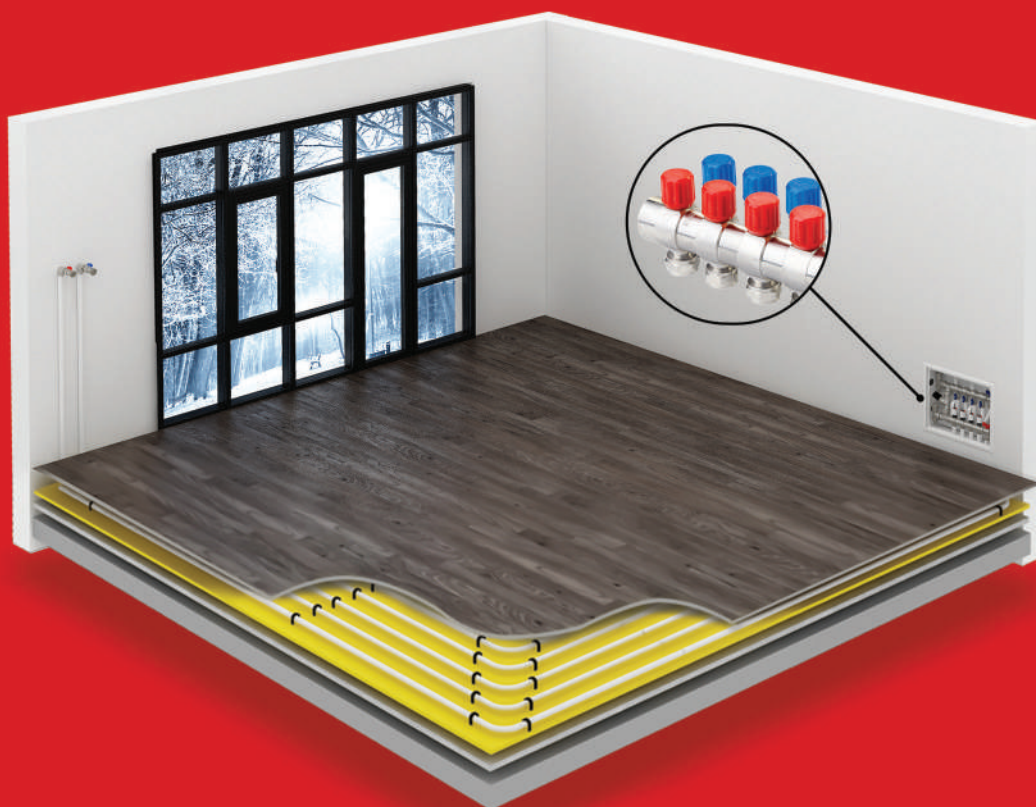


■ Advantages

- Production in accordance with international standard ASTM F1281.
- Up to 90 °c heat toleration.
- Low coefficient of linear expansion (as metals).
- Resistant to chemicals (acids, bases,...).
- No oxygen penetration into the pipes and thereby, destruction prevention in central heating systems.
- Excellent pressure resistance due to the aluminum layer and the continuous ultrasonic welding.
- Insignificant pressure drop due to the very low roughness coefficient (inside the pipe).
- No sediments, decays, rusts and water color & smell change.
- Flexibility.
- Easy & fast installation.

■ Usages

- Sanitary hot and cold water piping systems.
- Cooling, heating and air conditioning systems.
- Under-floor heating systems.
- Water transfer in risers.
- Sanitary industries, medical, industrial installations.



SGP

Installation Valves

Home warm blood vessels

■ Isfahan Chalak Company, one of the subsidiaries of **SGP** was established in 2002 and has been developing along with high-tech and updated technology. In addition to producing Pex and PPRC pipe fittings and brass ones, the company now provides a variety of building installation valves including those for water and gas. The products are made from a special type of brass alloy to improve the brass mechanical and chemical properties, and according to the standard of International Association of Plumbing and Mechanical Officials (IAPMO).

■ Water supply brass ball valves

Technical specifications:

- Applicable pressure: 10 bars.
- Test pressure: 16 bars.
- Production standard: BS EN 13828.
- Thread standard: ISO 228-1- BS 21.
- Applicable temperature: 5°C to 95°C.



■ Heating and cooling system valves

Technical specifications:

- Applicable pressure: 10 bars.
- Test pressure: 16 bars.
- Production standard: BS EN 13828.
- Thread standard: ISO 228-1- BS 21.
- Applicable temperature: 5 °C to 95 °C.



■ Radiator valves

Technical specifications:

- Applicable pressure: 10 bars.
- Test pressure: 16 bars.
- Production standard: BS 2767.
- Thread standard: ISO 228-1- BS 21.
- Applicable temperature: 120 °C.



■ Automatic bleed valves

Technical specifications:

- Applicable pressure: 10 bars.
- Test pressure: 16 bars.
- Thread standard: ISO 228-1- BS 21.
- Applicable temperature: 120 °C.





Azin Looleh^(ALS)

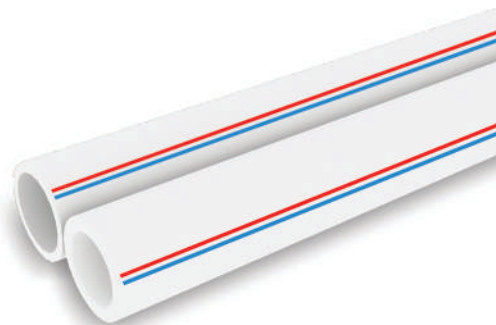
Single-layer polypropylene
pipes and fittings

Building plumbing DNA

■ Azin Looleh Sepahan Company is one of the largest producers of polypropylene single-layer pipes in Iran. The raw materials used in production process are polypropylene random copolymers (PPR TYPE 3), supplied from reputable manufacturers. The company now has 24 production lines with an annual capacity of 110 million meters of pipes in the sizes of 20 to 125 mm, and its products are under precise total quality control. Moreover, it is also active in the field of producing polypropylene fittings with a variety of more than 150 types using the most high-tech press and injection machines to make some 180 million pieces yearly.

■ Technical specifications (PPRCT, PPR)

Pipe Size (mm)	Standard thickness range (mm)/PPRCT	Standard thickness range (mm)/PPR	Standard external diameter range (mm)	Pipe length (m)
20	2.8-3.2	3.4-3.9	20-20.3	4
25	3.5-4	4.2-4.8	25-25.3	4
32	4.4-5	5.4-6.1	32-32.3	4
40	5.5-6.2	6.7-7.5	40-40.4	4
50	6.9-7.7	8.3-9.3	50-50.5	4
63	8.6-9.6	10.5-11.7	63-63.6	4
75	10.3-11.5	12.5-13.9	75-75.7	4
90	12.3-13.7	15-16.7	90-90.9	4
110	15.1-16.8	18.3-20.3	110-111	4
125	17.1-19	20.8-23	125-126.2	4



■ Raw materials technical specifications

International standards	ISO 15874-2 DIN 8077/8078
Pipe structure	Single layer
Consuming materials	Polypropylene (PP) random copolymer with modified crystallization (PPRCT)
Standard production series and class	S 2.5 SDR6 S 3.2 SDR7.4
Pipe color	White with blue and red stripes
Category and user pressure	User category 1- 10 bars pressure

■ Advantages

- Anti-sediment, anti-decay and anti-rust.
- Insignificant pressure drop due to the low roughness coefficient (inside the pipe).
- Fast and easy to install.
- Resistant to chemicals (acids,...).
- Resistant to physical shock and environmental degradation.
- Guide lines on all pipes and fittings.
- No microorganisms growth.

■ Usages

- Sanitary hot & cold water piping systems (and potable water application).
- Risers installation systems.
- Industrial installations.





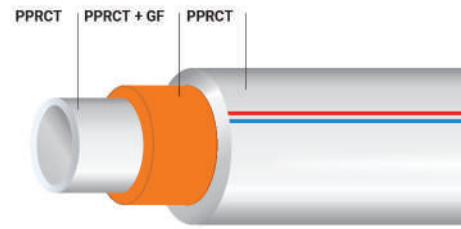
Azin⁺(ALS)
Three-layer PP pipes

Prestigious pipe

■ Azin Looleh Sepahan Company as the greatest . polypropylene pipe producer in Iran, has managed to produce and market the new 3-layer polypropylene pipes as reinforced with glass fibers and having unique features comparing with other polymer pipes. The company has already started to produce this up-to-date product under the brand name of Azin+, with an annual capacity of around 20 million meters, and in the sizes of 20 to 125 mm.

■ Technical specifications

Size (mm)	Thickness (mm)	Outer diameter (mm)
20	3.4	20.3
25	4.2	25.3
32	5.4	32.3
40	6.7	40.4
50	8.3	50.5
63	10.5	63.6
75	12.5	75.7
90	15	90.9
110	18.3	110
125	20.8	125



■ Features

Standards	ISO 21003-2 & ISO 15874-2 DIN 8077/8078
Class	S 2.5 - SDR 6 - PN25
Type	PPRC TYPE 3
Color	White
PN	10 Bars
Application Class	Class 1& 5

■ Advantages

- Increased pressure & temperature resistance of the product compared to single-layer PPR pipes.
- Very low linear expansion coefficient in comparison with single-layer PPR pipes (about 75% less):
 - Minimizes the changes in the pipe length caused by temperature fluctuations inside the piping system.
 - Minimizes the number of pipe clips used in the piping system and hence, reduces the costs.
- Higher mechanical properties as compared to single - layer PPR pipes.
- Quick and easy installation that saves about 30% of installation time compared with PPR foil pipes.
- Less heat loss compared to PPR foil pipes and metal ones due to its lower thermal conductivity coefficient.
- impossibility of layers separation.
- Lower weight than PPR foil and metal pipes and easy transportation.

■ Usages

- Sanitary hot & cold water piping systems (and potable water application).
- Cooling tower risers.
- Compressed air distribution systems.
- Fan coil unit drain piping.
- Risers installation systems.



NEWFLEX

Polypropylene sewage push-fit
pipes and fittings

Half a century of tranquility

■ Novin Ettesal Pardis Gostaresh Company, one of the subsidiaries of **SGP** has been established in 2007 to produce polypropylene sewage push-fit pipes and fittings. Under the NewFlex brand, the company produces its products in the sizes of 50 to 160 mm in B, BD and silent types.

■ Technical specifications

Color		Mid-gray RAL 7037
Density	g/cm ³	0.91
Tensile strength at 20 c°	N/mm ²	30
Yield stress	N/mm ²	21
Flexibility factor	N/mm ²	1200
Elongation	%	800
Bending stress	N/mm ²	20
Elasticity	N/mm ²	350
Impact strength	kJ/m ²	25
Thermal conductivity	W/m ² K	0.23
Linear expansion coefficient	m/mK	0.00015
Roughness index	mm	0.007
PH rate		2-12



■ Advantages

- High impact resistance, even at temperatures below 0 °c.
- High thermal resistance to hot outlet water of dishwashers and washing machines.
- Easy installation (no adhesive or welding).
- Smooth inner surfaces of the pipes and the fittings.
- No sediment due to roughness index less than 0.007 mm.
- Quick installation without using any complex equipment.
- Resistance to various types of chemicals (acids, bases, ...), detergents, stain removers, and etc.
- Fire resistance in likely combustions.
- Wide variety of fittings for easy installation and disassembling.
- Resistance to microorganisms and rodents.
- Lightweight and easy to carry.
- Long life.
- Quake and subsidence resistance.

■ Usages

- Sewage disposal systems of residential buildings, offices, complexes, hotels and hospitals.
- Condensate water drainage of air conditioning systems.
- Urban sewage pipes.
- Rain water collection systems.



NEWFLEX

Silent (3-layer) sewage
pipes and fittings

Half a century of tranquility

■ Novin Ettesal Pardis Gostaresh Company is one of the subsidiaries of **SGP** Industrial Group. The company has been producing silent 3-layer sewage pipes and fittings since 2016.

Three layer silent push-fit pipes are produced in different diameters of 50 to 160 mm.

■ Technical specifications

Color		Papyrus white RAL 9018
Density	g/cm ³	1.507
Tensile strength at 20 °c	N/mm ²	25
Yield stress	N/mm ²	20
Flexibility factor	N/mm ²	800
Elongation	%	150
Bending stress	N/mm ²	20
Elasticity	N/mm ²	2600
Impact strength	kJ/m ²	30
Thermal conductivity	W/m ² K	0.55
Linear expansion coefficient	m/mK	0.09
Roughness index	mm	0.007
PH rate		2-12

■ Advantages

- Less sound transmission to adjacent surroundings.
- Impact resistance even at below zero temperatures.
- Smooth inner surfaces of the pipes and the fittings and hence, no sediments.
- Easy installation (no adhesive or welding).
- Quick installation without using any complex equipment.
- Wide variety of fittings for easy installation and disassembling.
- Long life.
- Quake and subsidence resistance.



■ Usages

- Sewage disposal systems of residential buildings, offices, complexes, hotels and hospitals.
- Condensate water drainage of air conditioning systems.
- Urban sewage pipes.
- Rain water collection systems.



MULTPIPE

PVC-U pipes and fittings

Economical water sealing system

Novin Ettesal Polymer Giti Company is one of the factories of Giti Pasand Industrial Group. This company operates in producing PVC-U sewage pipes and fittings branded as **MULTPIPE**. These pipes and fittings are being produced from the size 50 to 160 mm and have been marketed since 2023.

■ Technical specifications

Size	Thickness (mm)	Application
50	3	B
63	3	B
90	3	BD
110	3.2	BD
125	3.2	BD
160	3.2	B
160	4	BD

- Sewage (adhesive) pipes

Size	Thickness (mm)	Application
50	1.8	R
63	1.8	R
90	1.8	R
110	2.2	R
125	2.5	R

- Rainwater pipes (spout)

■ Advantages

- Efficient and economical.
- Non-clogging or sedimentation.
- Completely smooth and polished inner surface.
- Ease of access.
- Quick installation.
- Fire & heat resistance (slow- burning).
- Long life.
- Resistance to decay and corrosion.
- Electricity resistant.
- Resistance to impact and pressure.

■ Usages

- Wastewater disposal of residential and commercial buildings, offices, hotels, hospitals, etc.
- Building ventilation systems.
- Rainwater drainage systems.





DINA POLYMER

Single-layer polyethylene pipes

A drop for the greenery of the world

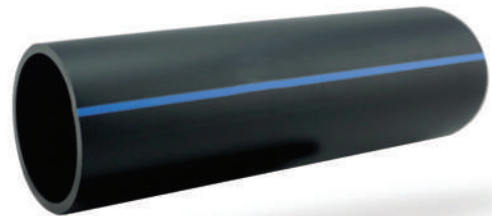
■ Since 2007, Dina Polymer Safahan Company has been active in production of single - layer polyethylene pipes in the sizes of 16 to 315 mm and in the pressure range of 4 to 20 bars. Equipped with 10 production lines according to the latest European technology, the company has achieved an annual production capacity of over 33,000 tons.

■ Technical specifications

	Pressure range PN in bar							
PE 80	PN 5		PN 6		PN 8		PN 10	
PE 100	PN 6		PN 8		PN 10		PN 12.5	
External diameter	Pipes' head							
	SDR 26		SDR 21		SDR 17		SDR 13.6	
	S 12.5		S 10		S 8		S 6.3	
(DN) mm	thickness (mm)	Pipe's weight per meter (kg/m)	thickness (mm)	Pipe's weight per meter (kg/m)	thickness (mm)	Pipe's weight per meter (kg/m)	thickness (mm)	Pipe's weight per meter (kg/m)
16	---	---	---	---	---	---	---	---
20	---	---	---	---	---	---	---	---
25	---	---	---	---	---	---	2.0	0.150
32	---	---	---	---	2.0	0.197	2.4	0.232
40	---	---	2.0	0.250	2.4	0.295	3.0	0.356
50	2.0	0.314	2.4	0.374	3.0	0.453	3.7	0.549
63	2.5	0.494	3.0	0.580	3.8	0.721	4.7	0.873
75	2.9	0.675	3.6	0.828	4.5	1.020	5.6	1.240
90	3.5	0.978	4.3	1.180	5.4	1.460	6.7	1.770
110	4.2	1.430	5.3	1.770	6.6	2.170	8.1	2.620
125	4.8	1.840	6.0	2.270	7.4	2.760	9.2	3.370
140	5.4	2.320	6.7	2.830	8.3	3.460	10.3	4.220
160	6.2	3.040	7.7	3.720	9.5	4.520	11.8	5.500
180	6.9	3.790	8.6	4.670	10.7	5.710	13.3	6.980
200	7.7	4.690	9.6	5.780	11.9	7.050	14.7	8.560
225	8.6	5.890	10.8	7.300	13.4	8.930	16.6	10.900
250	9.6	7.300	11.9	8.930	14.8	11.000	18.4	13.400
315	12.1	11.600	15.0	14.200	18.7	17.400	23.2	21.200

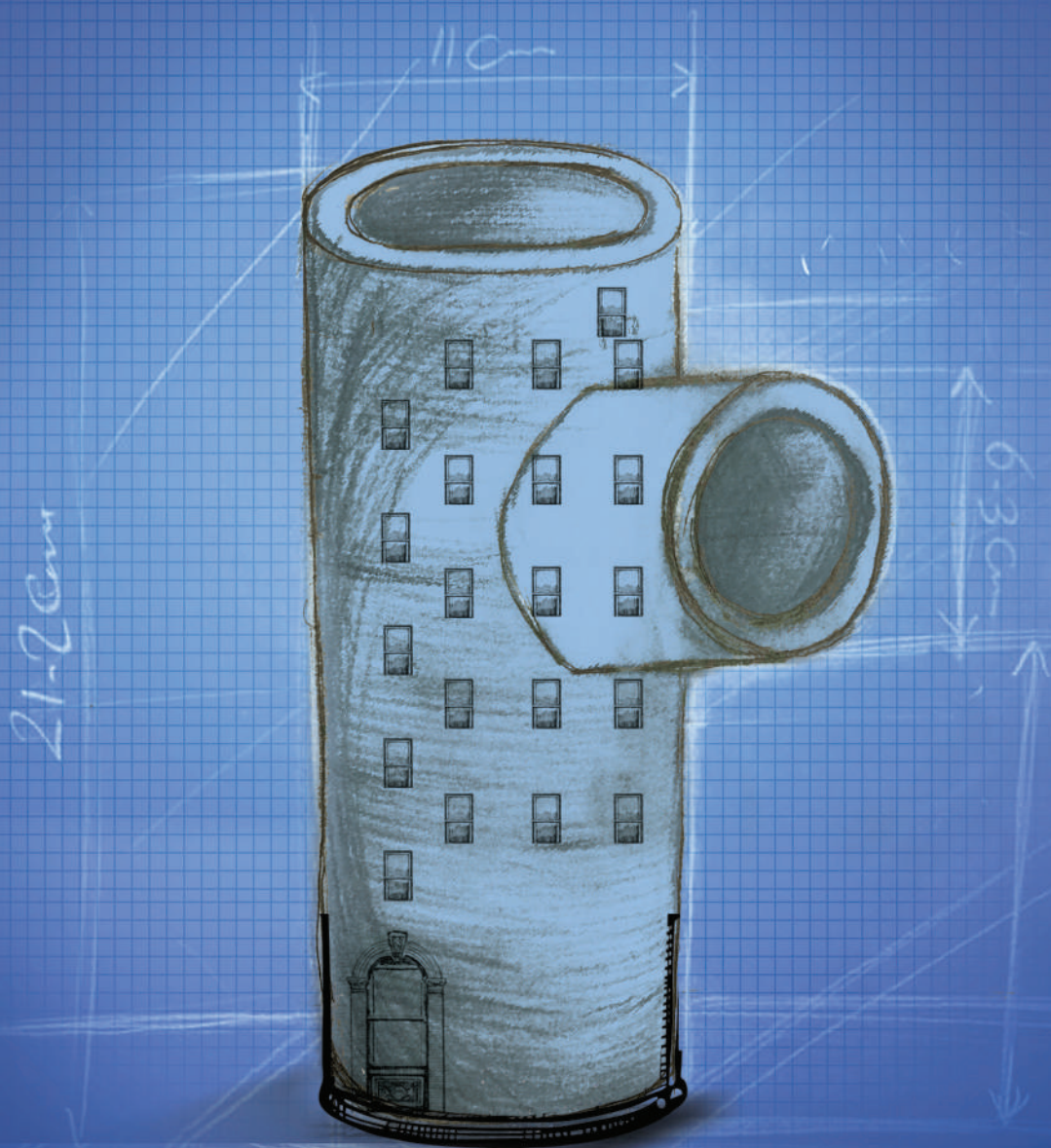
■ Advantages

- Life expectancy between 50 to 100 years.
- Resistance to sudden pressure changes.
- Sound, temperature and electricity resistance.
- Mechanical strength despite low density.
- Corrosion and chemical effect resistance.
- Low weight and simple handling with the least number of fittings, leads to a fast, easy and cheap installation, with no leaking.
- Capability of being used in areas with unstable cortical tissue.
- Using modern European machineries in production process.
- Equipped with an accredited laboratory to perform some 23 tests.
- High reliability and insignificant failures against quakes in hazardous areas.
- Low friction coefficient and its constancy throughout the application period.



■ Certificates

- Product conformity certificate to International Standard DIN 8074: 2011 from IQS UK Compliance Certificate.
- Product conformity certificate to International Standard EN 1555: 2010 of IQS UK.
- Certificate of Compliance with Russian Standards for Pipelines and Fittings by Water and Gas Supply.
- ISO 9001: 2008 Quality Management Certificate from LLC-CERTIFICATION.
- Membership of Polyethylene Pipes and Fittings Producers.



Qatran Ettesal

Sewage welded polyethylene pipes and fittings

■ Polyethylene pipes and fittings welded by Qatran Ettesal is a suitable choice for sewage and rainwater piping systems, now available in the sales network of Gitikala Iranian.

Established in 1991 in industrial town of Shargh Semnan, Qatran Ettesal came to produce polyethylene pipes and fittings, within a factory with an area of 12000 square meters.

Using the most modern machines in the world, the best raw materials, and the newest methods in production, this company has constantly been trying to provide its customers with high quality products. The production capacity of this industrial group in the pipe and fittings sector is about 30,000 tons per year, which also includes the whole building sewage, electrofusion and high pressure fittings.

■ Technical specifications

Color		Black
Hazen-Williams roughness index		150
long term elasticity	Mpa	200
Tensile strength	Mpa	23
Linear coefficient of thermal expansion	m/mK	0.17
Thermal conductivity coefficient	W/m ² K	0.43
standard life time	Years	50
Chemical resistance	PH	ISO 10358

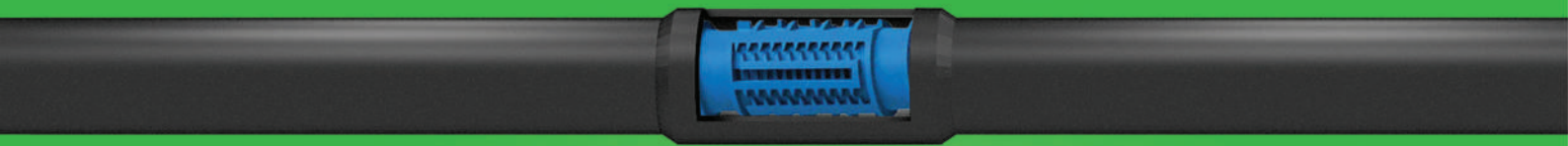
■ Features

- High flexibility and impact resistance.
- Polished internal surfaces and hence, no sediments.
- High resistance to all kinds of chemicals (acids, bases, etc.).
- A variety of connections to ease implementation.
- Light weight and easy to carry.
- Long life.
- Quake and subsidence resistance.



■ Usages

- Wastewater disposal of commercial and high buildings, hotels and hospitals.
- Rainwater piping systems.
- Branch sewer pipes.



DINA POLYMER

Polyethylene drip irrigation pipes

A drop for the greenery of the world

■ Dina Polymer Safahan Company is one of the subsidiaries of **SGP** Industrial Group with 6 drip irrigation production lines in two models: dripper and non-dripper pipes with an annual capacity of 175000 km (almost equivalent to 4.5 times round the Earth's surface). Meanwhile, the production of drip irrigation pipes is based on the latest European technologies and backed with well-equipped laboratories.

■ Technical specifications

Dripper pipes

Pipe diameter (mm)	16	20
Pressure range (bars)	4	4
Packing size (m)	400	400
Average water flow in drippers (Lit/hr)	4 & 2	4 & 2
Drippers space (cm)	min.20	min. 20

Non-dripper pipes

Pipe range (bars)	16			20		
Pressure range (bars)	4	5	6	4	5	6
Packing size (m)	100 & 400			400		

■ Usages

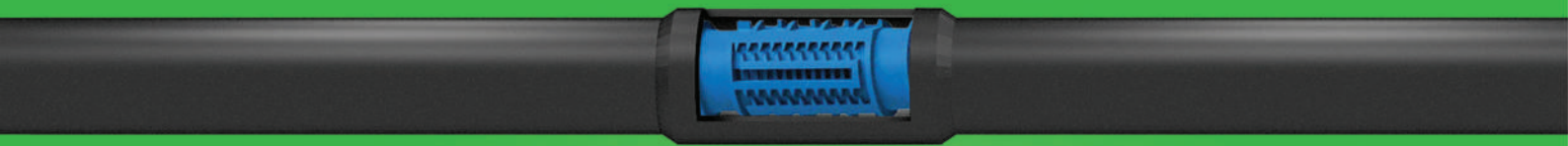
- Irrigation of gardens, green roofs, building enclosures and urban green spaces.

■ Advantages

- Having a large flow cross section.
- Excellent resistance to pore clogging.
- Clean filter due to higher water flow speed.
- UV resistance.
- Resistance to corrosion of chemicals and usual fertilizers.
- High irrigation efficiency (about 90%) and loss reduce followed in irrigation systems.
- No runoff or mud and thus, preserving the beauty of urban landscape.
- Protection of valuable herb species, through safe irrigation systems.

■ Certificates

- Certificate of conformity of the product with international standard BS EN ISO 9261:2010 from the UK IQS company.
- ISO 9001:2008 quality management certificate from LLC-CERTIFICATION.
- Certificate of compliance with some contries standards for drip irrigation pipes and fittings.



DINA POLYMER

Polyethylene drip irrigation pipes

A drop for the greenery of the world

■ Dina Polymer Safahan Company is one of the subsidiaries of **SGP** Industrial Group with 6 drip irrigation production lines in two models: dripper and non-dripper pipes with an annual capacity of 175000 km (almost equivalent to 4.5 times round the Earth's surface). Meanwhile, the production of drip irrigation pipes is based on the latest European technologies and backed with well-equipped laboratories.

■ Technical specifications

Dripper pipes

Pipe diameter (mm)	16	20
Pressure range (bars)	4	4
Packing size (m)	400	400
Average water flow in drippers (Lit/hr)	4 & 2	4 & 2
Drippers space (cm)	min.20	min. 20

Non-dripper pipes

Pipe range (bars)	16			20		
Pressure range (bars)	4	5	6	4	5	6
Packing size (m)	100 & 400			400		

■ Usages

- Irrigation of gardens, green roofs, building enclosures and urban green spaces.

■ Advantages

- Having a large flow cross section.
- Excellent resistance to pore clogging.
- Clean filter due to higher water flow speed.
- UV resistance.
- Resistance to corrosion of chemicals and usual fertilizers.
- High irrigation efficiency (about 90%) and loss reduce followed in irrigation systems.
- No runoff or mud and thus, preserving the beauty of urban landscape.
- Protection of valuable herb species, through safe irrigation systems.

■ Certificates

- Certificate of conformity of the product with international standard BS EN ISO 9261:2010 from the UK IQS company.
- ISO 9001:2008 quality management certificate from LLC-CERTIFICATION.
- Certificate of compliance with some contries standards for drip irrigation pipes and fittings.



SGP Tools
Plumbing Tools

Plumbing all-rounder

■ In order to support **SGP** Industrial Group products, Ati Ghet'e Sepahan Company, was inaugurated in 1988 and managed to design and produce tools to ease the installation of the Group's manufactured products.

To supply quality products, easily applicable and with good after-sales services is considered as the strategic goal of this company in order to improve customers' satisfaction.

■ Five-layer Pipe Hydraulic Press

This press is a useful tool for installing press fittings from the size 16 to 63 mm. The time of each operating period equals to 10,000 press cycles, after which the tool must be delivered to the company official agency for technical services. The tool warranty period is one year or 10,000 initial press cycles.

Driving force	Battery charging time	Pressing time	Press performance	Sound level	Vibrations	Battery voltage
33KN At least	1h	4 to 11 seconds depending on the ring size	About 150 presses per charge	75 dB at a distance of one meter	3.5 m/s	12 V



■ Fusion Welding Set box

In order to carry out plumbing with one and three layer PPRCT pipes, a welding tool and its accessories are produced and placed in a box for ease of transportation and supplied to customers with one-year warranty.

This box contains welding machine, element plate, support, meter, pipe cutter, mold wrench and molds in the sizes of 20 to 40 mm.



■ Fusion Welding Tool

This device can be supplied separately with one-year warranty and used for plumbing purposes of large-size PPRCT pipes from 63 to 125 mm.



■ Welding Molds

Welding molds can be provided in sizes of 20, 25, 32, 40, 50, 63, 75, 90, 110 and 125 mm.



■ Five-layer Pipes Press Jaw

This set including 4 sizes of jaws, for pressing different sizes (16, 20, 25, 32, 40, 50, 63 mm) of pipes, is offered to the market along with the hydraulic press of SGP brand.



■ Five Layer Pipe Bending Tool

In order to facilitate bending and avoid breaking the aluminum foil of five-layer pipes, this pipe bender has been designed and built for accurate bending of pipes involving four sizes of 16, 20, 25 and 32 mm up to 90°.



■ Newflex Stopper Test Tool

This device can be used in order to facilitate the pipe testing process and to ensure proper and standard plumbing for push-fit PP pipes in the size of 110 to 160 mm.



■ Five-layer Pipe Tool Box

Tools required by a five-layer pipe plumber include three sizes of springs (16, 20 and 25 mm), 32 mm calibrator, star PEX calibrators (the sizes 16, 20 and 25 mm), a pipe cutter and a meter in the tool box.



■ Pipe stapler

This device has been produced and marketed to improve the quality level, and to speed up the piping installation and implementation procedures during which floor heating systems are set up using five-layer pipes.





Sepehr Foam

Thermal insulations

Building efficient saver

■ Sepehr Polymer Espadana Company, one of the **SGP** subsidiaries of started production of different types of polyethylene foams under the brand name of "Sepehr Foam" in 2006. Capable of manufacturing more than 10,000 tons of products including polyethylene EPE and Cross-Linked XPE extruded polystyrene foams, the company has a lion share in the country and in the Middle East. Being fabricated according to the international standards and supported by the SGP high-tech polymer laboratory, the products of this company are supplied to the both domestic and foreign markets in various industries such as construction, automotive, sports, gas and petrochemicals, packaging, home appliances and so on.

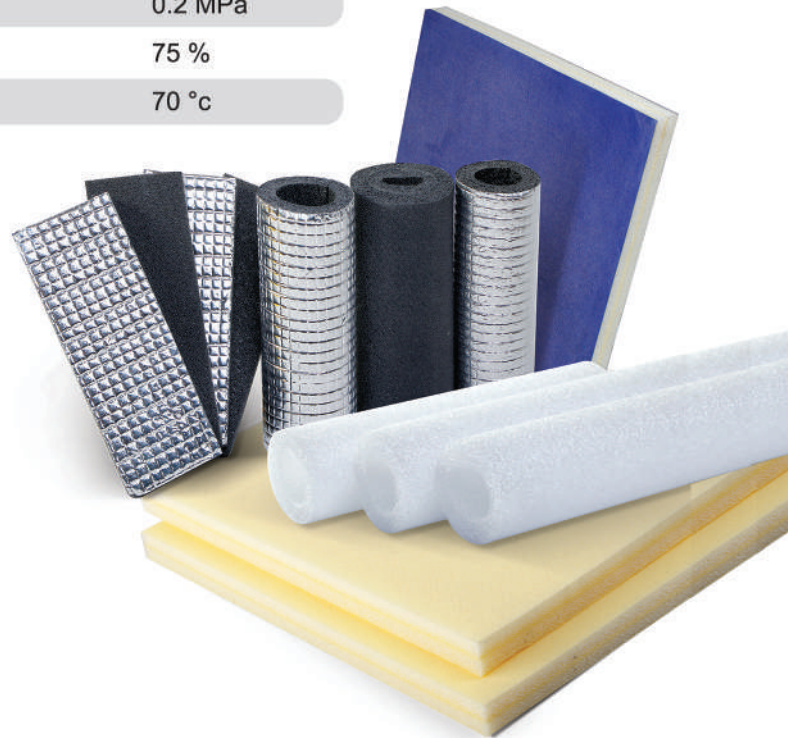
■ Technical specifications

Polyethylene foams are produced in the thicknesses of 0.5 to 35 mm in the form of sheets and in the thicknesses of 40 to 120 mm in the shape of mats. These insulators are capable of being laminated with a variety of aluminum foils, metalized coat, polymer films and PVC.

The product is also available in the sizes of 2 to 3.8 inches in the form of pipe foams.

EPE technical specifications:

Density (ASTM D3575-W)	25 Kg/m ³
Compression set (ASTM D3575-B)	29 %
Thermal conductivity coefficient (ASTM c335)	0.035 W/m° K
Water absorption (ASTM D3575-L)	0.107 Kg/m ²
Tensile strength (ASTM D412)	0.2 MPa
Linear expansion (ASTM D412)	75 %
Thermal tolerance	70 °c



■ Polyethylene cross-linked XPE foams

Polyethylene foams are produced in the thicknesses of 0.5 to 35 mm in the form of sheets and in the thicknesses of 40 to 120 mm in the shape of mats. These insulators are capable of being laminated with a variety of aluminum foils, metalized coat, polymer films and PVC.

The product is also available in the sizes of 2 to 3.8 inches in the form of pipe foams.

XPE technical specifications:

Density (ASTM D3575-W)	30-200 Kg/m ³	Thermal tolerance	90 °c
Compression set (ASTM D3575-B)	%20<	Flammability (DIN 4102)	class B2
Thermal conductivity coefficient (ASTM C335)	0.033 W/m° K	Water vapor permeability (WVP)	0.003 mg/hmpa
Water absorption (ASTM D3575-L)	0.03 Kg/m ²	Water vapor resistance factor	6.788 mm ² pa/mg
Tensile strength (ASTM D412)	0.3 MPa	water vapor permeability index	0.169 mg/hm ² pa
Linear expansion (ASTM D412)	110 %	Water transmission rate	204.26 mg/hm ²



Hamgam Taban Asia

Hermetic wall-hang combi boilers, Istanbul model

We'll warm you up...

■ In 2015, Hamgam Taban Asia Company managed to purchase and set up an advanced Italian gas package production line and simultaneously, it gained access to its technical knowledge via Tesy Company. It came to a joint venture agreement with EMKO -Türkiye through which transferred the production and operation technology of gas combi boilers lines into Iran (under that company's license), and therefore, succeeded to open a new way developing its products.

Hermetic wall-hang heating combi boilers (Istanbul model) is now available in the sales network of Gitikala Iranian company, to be presented to the customers.

■ Technical specifications

		Star 24	Star 28	Star 32
Maximum nominal power (Qn)	KW	25.6	29.6	33.9
Minimum nominal power (Qm)	KW	9.5	11.1	11.5
Maximum thermal power (Pn)	KW	23.5	27.1	31.3
Minimum thermal power (Pm)	KW	8.5	10	10.2
Nominal efficiency	%	92.5	92.3	92.4
Efficiency class at 100% power (according to EEC 92/42)	category	***	***	***
Degree of electrical protection	IP	x4D	x4D	x4D
Nox class	class	2	2	2
Gas category	-	G20		
Allowed installation type	-		B22-C12-C32-C42	~220/50
Radiator		35-80	35-80	35-80
Temperature of the heating system (low temperature / high temperature)	°C	0.5 - 3	0.5 - 3	0.5 - 3
Underfloor heating		25-50	25-50	25-50
Heating system min & max pressure	bar	0.5 - 3	0.5 - 3	0.5 - 3
The volume of the expansion source	l	6	7	7
Heating system min & max pressure	bar	0.3 - 6	0.3 - 6	0.3 - 6
minimum spa literage used $T\Delta = \psi \cdot$	l/min	3	3	3
Spa temperature adjustment range	°C	30 - 65	30 - 65	30 - 65
Hot water discharge	l/min	10	12.2	14.8
Dimensions (width, height, depth)	mm	404X330X712	404X330X712	404X330X712
Weight	kg	28	33	34
Dimensions of coaxial chimney pipes	mm	100/60	100/60	100/60
Heating system input and output connections	Ø	3/4"-3/4"	3/4"-3/4"	3/4"-3/4"
Hot water temperature adjustment range	Ø	1/2"-1/2"	1/2"-1/2"	1/2"-1/2"
Gas inlet connection	Ø	3/4"	3/4"	3/4"
Voltage and frequency of electricity	V/Hz	~230/50	~230/50	~230/50
Maximum power consumption	W	125	135	140

■ Device equipment properties

- Top quality Italian fan (FIME).
- Original best quality heat exchanger made in Italy (Valmex).
- Top quality burner made in Italy (Polidoro).
- High quality electric 3 - way Italian valve (Elbi/Bitron).
- Best quality brass hydroblock complete kit made in Türkiye (Brass Arcell).
- Top quality european water circulation pump (Grundfos).
- Quality European plate heat exchanger (ZILMET/SWEP)
- Remote control and electronic board made in Italy/Türkiye (NORDGAD/ENPI).

■ Features

- Compact dimensions of 330X710X400 (mm) in all Hermetic sizes.
- Anti-freeze function for both sanitary hot water and heating systems circuits.
- Protection system against pumps' and three-way valves gripage.
- Armed with a safety approach for toxic fume exhaust (caused by combustion) through a microprocessor control system.
- Protection against heating circuit blocking (automatic bypass).
- 93% efficiency.
- Capability of being connected to a room thermostat.



Hamgam Taban Asia

Hermetic wall-hang combi boilers, star model

We'll warm you up...

■ Hamgam Taban Asia Company, has been active in producing wall-hang combi boilers since 2015. It's come to import both production line and the corresponding technology to Iran and accordingly, found its way towards its products development. The company has been of various products one of which is Hermetic wall-hang combi boilers (Star model), now available in the sales network of Gitikala Iranian company, to be released to the market.

Technical specifications

		Star 24	Star 28	Star 32
Maximum nominal power (Qn)	KW	25.6	29.6	33.9
Minimum nominal power (Qm)	KW	9.5	11.1	11.5
Maximum thermal power (Pn)	KW	23.5	27.1	31.3
Minimum thermal power (Pm)	KW	8.5	10	10.2
Nominal efficiency	%	92.5	92.3	92.4
Efficiency class at 100% power (according to EEC 92/42)	category	***	***	***
Degree of electrical protection	IP	x4D	x4D	x4D
Nox class	class	2	2	2
Gas category	-	G20		
Allowed installation type	-		B22-C12-C32-C42	~220/50
	Radiator	35-80	35-80	35-80
Temperature of the heating system (low temperature / high temperature)	°C	0.5 - 3	0.5 - 3	0.5 - 3
	Underfloor heating	25-50	25-50	25-50
Heating system min & max pressure	bar	0.5 - 3	0.5 - 3	0.5 - 3
The volume of the expansion source	l	6	7	7
Heating system min & max pressure	bar	0.3 - 6	0.3 - 6	0.3 - 6
minimum spa literage used	$T\Delta = 1^\circ$ l/min	3	3	3
Spa temperature adjustment range	°C	30 - 65	30 - 65	30 - 65
Hot water discharge	l/min	10	12.2	14.8
Dimensions (width, height, depth)	mm	404X330X712	404X330X712	404X330X712
Weight	kg	28	33	34
Dimensions of coaxial chimney pipes	mm	100/60	100/60	100/60
Heating system input and output connections	Ø	3/4"-3/4"	3/4"-3/4"	3/4"-3/4"
Hot water temperature adjustment range	Ø	1/2"-1/2"	1/2"-1/2"	1/2"-1/2"
Gas inlet connection	Ø	3/4"	3/4"	3/4"
Voltage and frequency of electricity	V/Hz	~230/50	~230/50	~230/50
Maximum power consumption	W	125	135	140

Device equipment properties

- Top quality Iranian fan (Hamgam/Damandeh).
- Original best quality heat exchanger made in Iran (PARS).
- Top quality burner made in iran (BAS).
- High quality electric 3 - way Chinese valve (Chunhui).
- Best quality polymeric hydroblock complete kit made in Türkiye (Arcell/Pakkense).
- Top quality European water circulation pump (DUCA/shinho).
- High quality European plate heat exchanger (ZILMET/SWEP)
- Electronic control board made in china/Türkiye (VANW/ENPI).
- High quality Chinese / Turkish gas valve (BDR/XIT)

Features

- Compact dimensions of 330X710X400 (mm) in all Hermetic sizes.
- Anti-freeze function for both sanitary hot water and heating systems circuits.
- Protection system against pumps and three - way valves gripage.
- Armed with a safety approach for toxic fume exhaust (caused by combustion) through a microprocessor control system.
- Protection against heating circuit blocking (automatic bypass).
- 93% efficiency.
- Capability of being connected to a room thermostat.



Hamgam Taban Asia

Steel panel radiators (Istanbul, Star Plus and Star)

We'll warm you up...

■ Hamgam steel panel radiators (Istanbul, Star Plus, and Star models) as offered by the sales network of Giti Kala Iranian Company are suitable choices for heating systems of the buildings. Hamgam Taban Asia Company was opened in 2013 as one of the subsidiaries of Hamgam Industrial Group and started its activity in the field of producing domestic and industrial cooling and heating systems, using modern technologies as the fully automatic European production lines.

■ Technical specifications

Brand	Thermal power	Sheet thickness	Tees	Installation kit	Warranty
Istanbul	2000 kcal per hour	1.1 mm	Made in Türkiye (under license)	brass	144 months
Hamgam General (Star Plus)	1910 kcal per hour	1.1 mm	Made in Iran (with some items imported)	polymeric	120 months
Star	1910 kcal per hour	1 mm	Made in Iran (with some items imported)	polymeric	120 months

■ Features

- Axis 50 cm with lengths 60,80,100,120,140,160 cm
- Half panel and full block leakage test up to 12 bars.
- Reducing the number of air venting times compared to the aluminum radiators.
- Phosphate coating and corrosion-resistant (polyester static powder) painting done by robots.
- Compatibility with copper heat exchangers of heating circuits (in houses equipped with wall-hang combi boilers).





Batis

Gypsum boards and ceiling tiles

Behin Sazan No-Andish Sepahan Factory, known as the second large gypsum board producer in Iran, is located in Garmsar industrial zone. Its annual capacity of production amounts to 10 million square meters in its very first phase. The factory manufactures its products according to international Standard EN520, under the brand name BATIS.

■ Gypsum boards

These are gypsum cored boards, the surfaces and edges of which are covered with a special firm kind of paper. They are generally used in dry construction systems (such as separator walls, covering treatment walls and dropped ceilings).

Technical specifications

- Two regular (RG) and moisture resistant (MR) Types.
- Dimensions 2400 x 1200 mm.
- Thickness 9.5 and 12.5 mm.
- Produced in compliance with international standard EN520.

Features

- Easy installation.
- Sound, temperature and moisture insulated.
- Capable of being painted or wallpapered immediately after installation.
- Lightening the buildings.

Usages

- Dropped ceilings.
- Separating walls.
- Interior walls of the building.
- Prefabricated buildings.
- Alternative to traditional whitewashing.



■ Light steel sections (structures)

Structures play an important role in strength and longevity of integrated roofs and separating walls. Battis structures are produced from light galvanized steel sheets with U-L-F shaped sections through cold rolling method and out of the best galvanized sheets found in the country.



■ Sealant powder

Batis sealant is used for sealing gypsum coated plates. the putty is applied as a thin layer of 1 to 2 mm thickness and forms a reinforced and strong structure.

■ Ceiling tiles

Patterned gypsum tiles are applied mostly in movable, closed and decorative ceilings. Those with PVC coating are produced and offered to the market in 7 different designs and in two types: plain backed and aluminum backed tiles, the latter of which are used in places where there is a possibility of water spillage caused by sweating behind the tiles (such as the passage of utility pipes or in wet areas such as swimming pools).



Technical specifications

- Dimensions 600 x 600 mm.
- Thickness 7.5 mm.

Features

- Quick and easy installation.
- Beautiful appearance.
- Easy access to the home installations space.
- No more painting operations needed.
- Ease of maintenance.

Head Office , Golshahr St., Africa Blvd., Tehran, Iran.
Tel: +98 21 823 77 (2171)
Email: export@gitikala.com export@sgpco.com



sgpco.com



MULTIPIPE

New Flex

SGP

AZIN PIPE

NEW PIPE



Batis

Qatran Ettesar

Dina Polymer

Sepehr Polymer

AZIN+

Gitikala®

gitikala.com